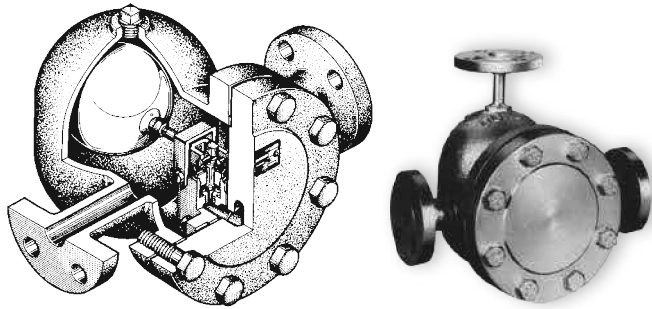
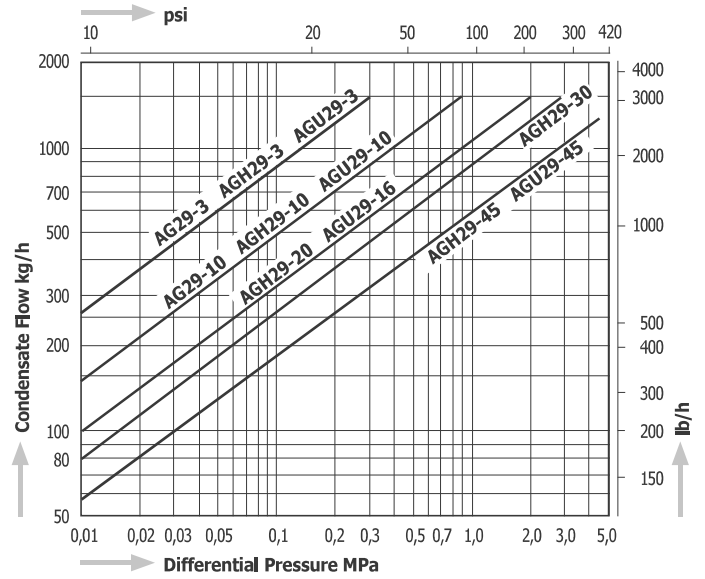


# AG29



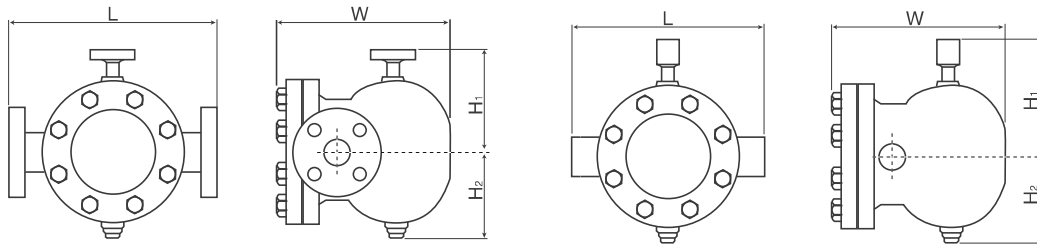
Capacity Chart AG29, AGH29, AGU29



**Dimensions**

**AG29, AGH29, AGU29**

**AGH29W, AGU29W**



Model	Connections	Size	Max. Operating Pressure PMO		Max. Differential Pressure PMX		Max. Operating Temperature TMO		Dimensions (mm)				Dimensions (in)				Body Material	Weight			
			MPa	psig	MPa	psig	°C	°F	L	H1	H2	W	L	H1	H2	W		kg	lb		
AG29 - 3	Flanged JIS, ASME, DIN	½" - 1"	0,3	43	0,3	43	300	572	340	200	120	260	13.4	7.9	4.7	10.2	Ductile Cast Iron FCD450	26	57.2		
			0,97	140	0,97	140															
AGH29 - 10	Flanged JIS, ASME, DIN	½" - 2"	3,0	435	0,3	43	400	752	340	200	120	260	13.4	7.9	4.7	10.2	Cast Steel SCPH2	28,0*	61,6*		
					1,0	145												½" - 1"	½" - 1"		
					2,0	290												390	15,4	1¼" - 2"	1¼" - 2"
					3,0	435												1¼" - 2"	1¼" - 2"		
AGH29W - 20	Socket Weld JIS, ASME, DIN	½" - 1"	3,0	435	0,3	43	400	752	280	200	120	260	11.0	7.9	4.7	10.2	Cast Steel SCPH2	25,5	56.1		
					1,0	145															
					2,0	290															
					3,0	435															
AGU29 - 16	Flanged JIS, ASME, DIN	½" - 2"	3,0	435	0,3	43	400	752	340	200	120	260	13.4	7.9	4.7	10.2	Stainless Steel SCS13A	28,0*	61,6*		
					1,0	145												½" - 1"	½" - 1"		
					1,6	230												390	15,4	1¼" - 2"	1¼" - 2"
					4,5	652												4,5	652	1¼" - 2"	1¼" - 2"
AGU29W - 10	Socket Weld JIS, ASME, DIN	½" - 1"	3,0	435	0,3	43	400	752	280	200	120	260	11.0	7.9	4.7	10.2	Stainless Steel SCS13A	25,5	56.1		
					1,0	145															
					1,6	230															
					4,5	652														4,5	652

\* The weight may differ depending on the size and flange standard.