

# TS1



### Features

To check operation of steam traps

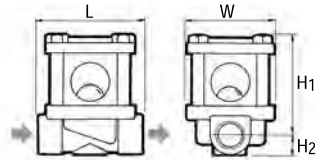
### Suitable for

Steam and liquid lines

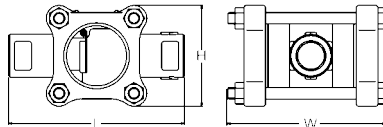
# T3



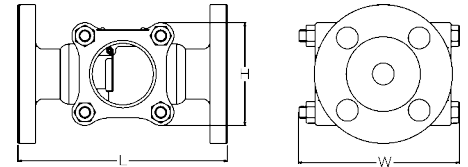
### Dimensions TS1



### T3



### T3F



Model	Connect.	Size	Max. Operating Pressure		Max. Operating Temperature		Dimensions (mm)					Dimensions (in)					Body Material	Weight							
			MPa	psi	°C	°F	L	H	H1	H2	W	L	H	H1	H2	W		kg	lb						
TS1	Screwed Rc, NPT	1/2"	0,8 1,0	Steam Water	116 145	Steam Water	180 100	Steam Water	356 212	60	80	69	14	3.1	2.7	0.5	2.4	Brass C3771	0,9	1.8					
		3/4"										71	17		2.8	0.7			1,0	2.0					
		1"										85	21		3.3	3.0			1,2	2.2					
T3	Screwed Rc, NPT	1/2"	1,0		145		183	361			123	70		110	4.8	2.8		Cast Steel A216WCB	1,6	3.5					
		3/4", 1"																	155	85	6.7	3.3	6.1	1,7	3.7
		1 1/4"																						3,3	7.3
		1 1/2"																						3,2	7.0
		2"																						195	115
T3F	Flanged JIS, ASME, DIN	1/2"	1,0		145		183	361			144	70		110	5.7	2.8		Cast Steel A216WCB	3,3	7.3					
		3/4"																	155	85	7.1	3.3	6.1	4,4	9.7
		1"																						5,0	11.0
		1 1/4"																						8,0	17.6
		1 1/2"																						9,0	19.8
2"	210	115	185	8.3	4.5	7.3	Cast Iron FC200	12,0	26.4																

## Spare Parts

